

# SG-P11-120-025-15-R2-1000-00000

## PLANETARY GEARBOXES

SG 120

$i=025$

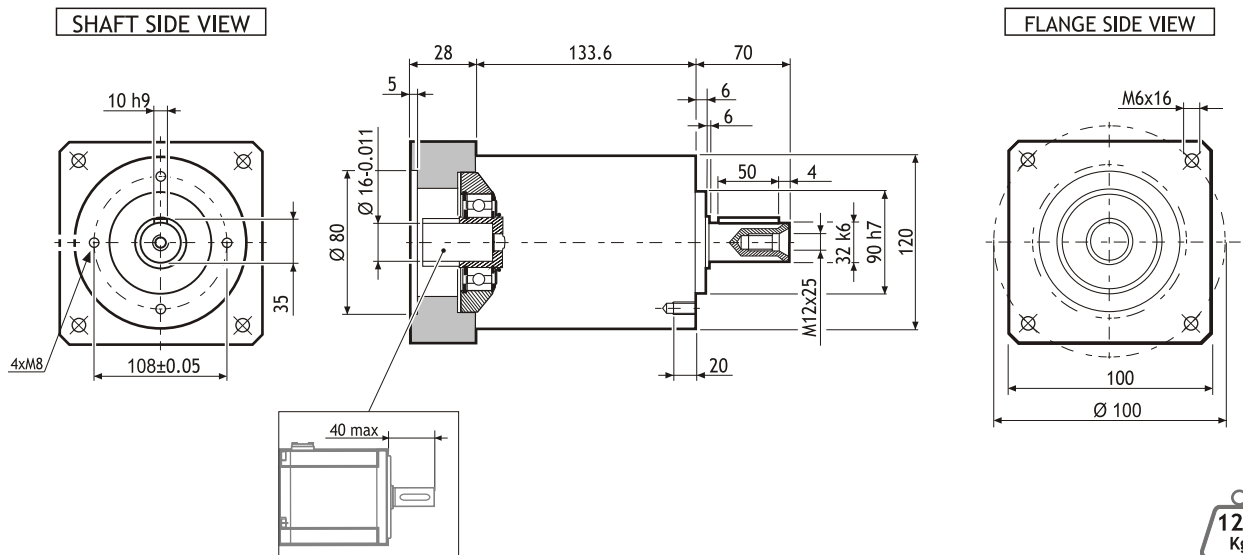
$\varphi=15'$

MADE IN ITALY

IP64



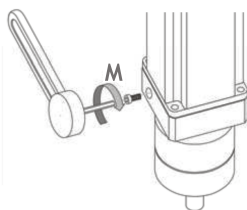
## Dimensions (Units:mm)



12.1 Kg

| MODEL                           | Rated output torque [Nm] | Maximum acceleration output torque [Nm] | Emergency step output torque [Nm] | Backlash [arcmin] | Nominal input speed [min <sup>-1</sup> ] | Maximum momentary input speed [min <sup>-1</sup> ] | Torsional stiffness [Nm/arcmin] | Maximum radial force applying on output shaft [N] | Maximum axial force applying on output shaft [N] | Gear efficiency [%] | Gear moment of inertia [Kg <sup>m</sup> ²] |
|---------------------------------|--------------------------|---|-----------------------------------|-------------------|--|--|---------------------------------|---|--|---------------------|--|
| SG-P11-120-025-15-R2-1000-00000 | 110                      | 190                                     | 360                               | 15'               | 3000                                     | 4500   | 22.5                            | 3500  | 3000   | 94                  | 0.71x10 <sup>-4</sup>                      |

## Suggested motors



R2AAB8100 SERIES



MOUNTING OPERATION MODE: ■ Tightening torque M=11 Nm ■ Locking bolt M6 ■ R.T.A. Quality Control