

# SG-P11-120-010-12-R2-0750-00000

## PLANETARY GEARBOXES

SG 120

$i=010$

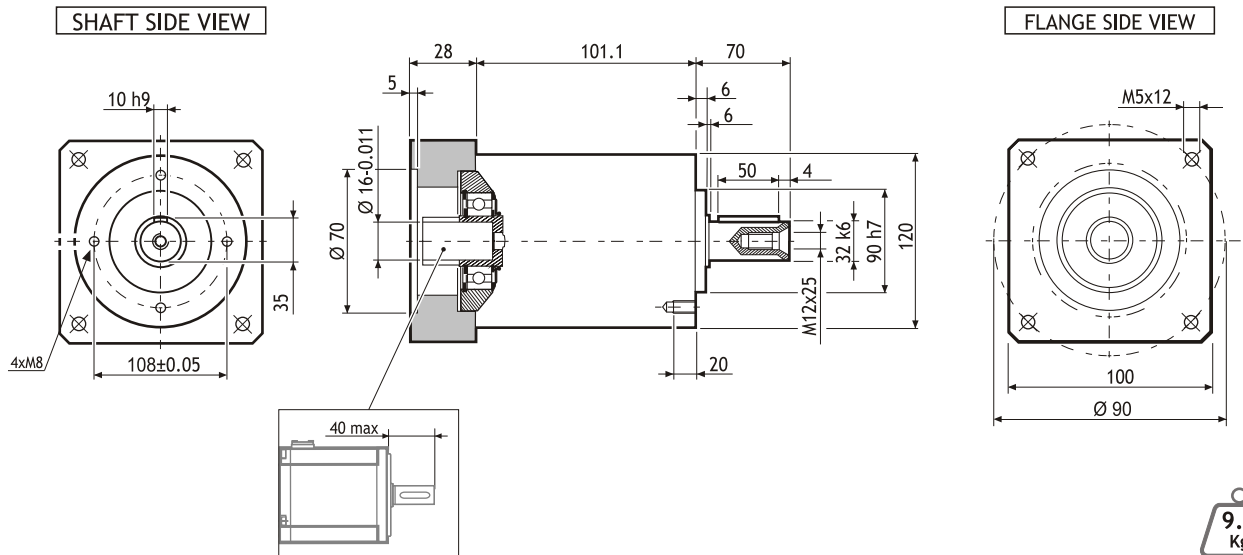
$\varphi=12'$

MADE IN ITALY

IP64



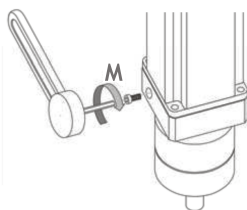
## Dimensions (Units:mm)



9.6 Kg

MODEL	Rated output torque [Nm]	Maximum acceleration output torque [Nm]	Emergency step output torque [Nm]	Backlash [arcmin]	Nominal input speed [min <sup>-1</sup> ]	Maximum momentary input speed [min <sup>-1</sup> ]	Torsional stiffness [Nm/arcmin]	Maximum radial force applying on output shaft [N]	Maximum axial force applying on output shaft [N]	Gear efficiency [%]	Gear moment of inertia [Kg <sup>m</sup> ²]
SG-P11-120-010-12-R2-0750-00000	95	160	300	12'	3500	5000	25	3500	3000	97	0.49x10 <sup>-4</sup>

## Suggested motors



R2AA08075 SERIES



MOUNTING OPERATION MODE: ■ Tightening torque M=11 Nm ■ Locking bolt M6 ■ R.T.A. Quality Control