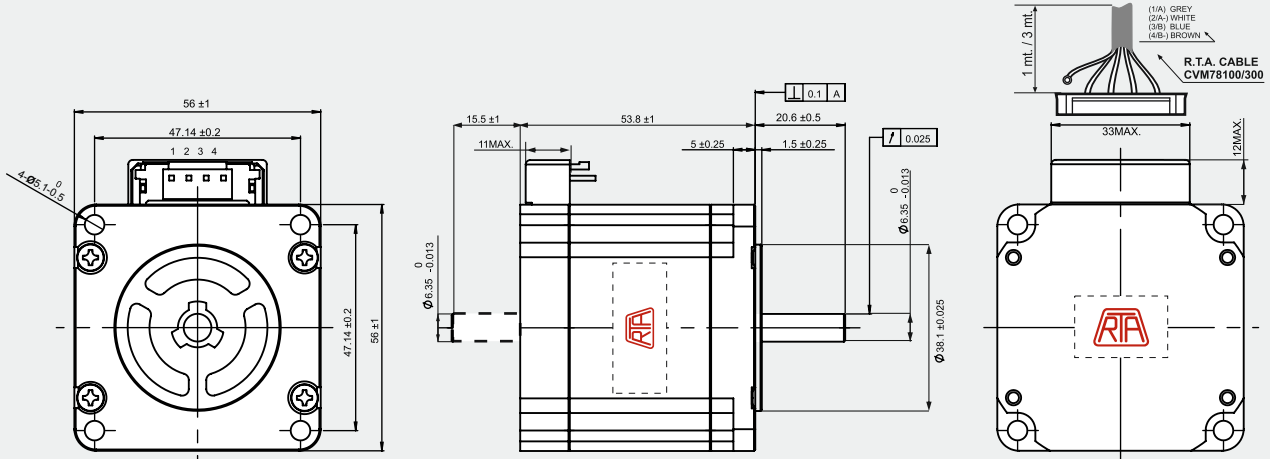


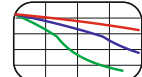
# RH 2S1M

## Dimensions (Unit:mm)



MOTOR CONNECTOR IS JST mod. B4P-VH 4 POLES MALE.  
FOR CONNECTION USE JST mod. VHR-4N FEMALE CONNECTOR AND  
mod. SVH-21 T-P1.1 CONTACTS.  
**NOTE:** RH2S (RS) MOTORS NEED CVM78100 AND CVM78300  
R.T.A. CABLES. CONTACT R.T.A. FOR FURTHER DETAILS.

**+ 30%  
HOLDING  
TORQUE**

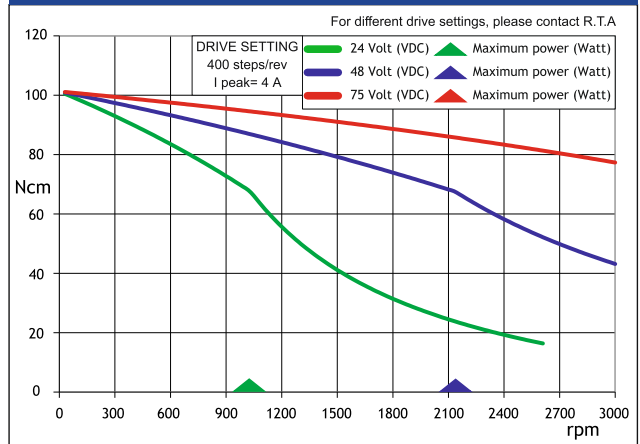


THAN THE PREVIOUS «H» SERIES

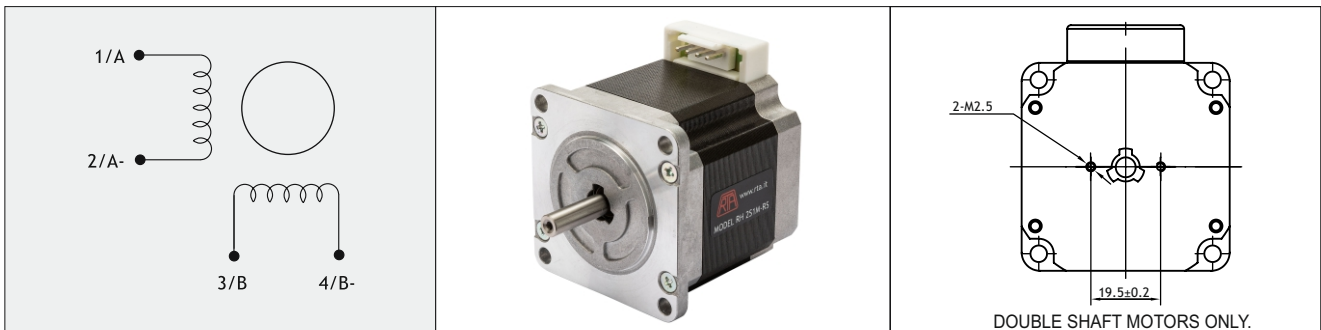
## FEATURES

MODEL	RH 2S1M (RH 2S1M-RS)	
BASIC STEP ANGLE	1.8 ± 0.09°	
BIPOLAR CURRENT	(Amp)	4.0
UNIPOLAR CURRENT	(Amp)	
RESISTANCE	(Ohm)	0.37
INDUCTANCE	(mH)	1.5
BIPOLAR HOLDING TORQUE	(Ncm)	140
ROTOR INERTIA	(Kg m <sup>2</sup> x 10 <sup>-7</sup> )	280
THEORETICAL ACCELERATION	(rad x sec. <sup>-2</sup> )	50000
BACK E.M.F.	(V/Krpm)	35
MASS	(Kg)	0.69
INTERNATIONAL STANDARDS	UL, CSA	
PROTECTION DEGREE	IP40	
LEADS CODE	V	

## TORQUE/SPEED CURVE



Codes between brackets refer to double shaft models.



Suggested R.T.A. drive series: BSD, CSD, FLEX-DRIVE, NDC



R.T.A. s.r.l.  
Via E. Mattei - Fraz- Divisa  
27020 Marcignago (PV) (Italy)  
T +39.0382.929.855  
F +39.0382.929.150  
www.rta.it

R.T.A. Deutschland GmbH  
Bublitzter Strasse 34, 40599  
Duesseldorf (Germany)  
T +49.211.749.668.60  
F +49.211.749.668.66  
www.rta-deutschland.de

R.T.A. IBERICA  
C/Generalitat 22, Local 1  
08850 Gava - Barcelona (Spain)  
T +34 936.388.805  
F +34 936.334.595  
www.rta-iberica.es

R.T.A. INDIA Pvt  
Teerth Business Center 3<sup>rd</sup> Floor, Unit No. 7,  
Block EL-15, MIDC Bhosari Pimpri-Chinchwad,  
Pune 411026 (India)  
Tel. +91 9422507445  
www.rta-india.in