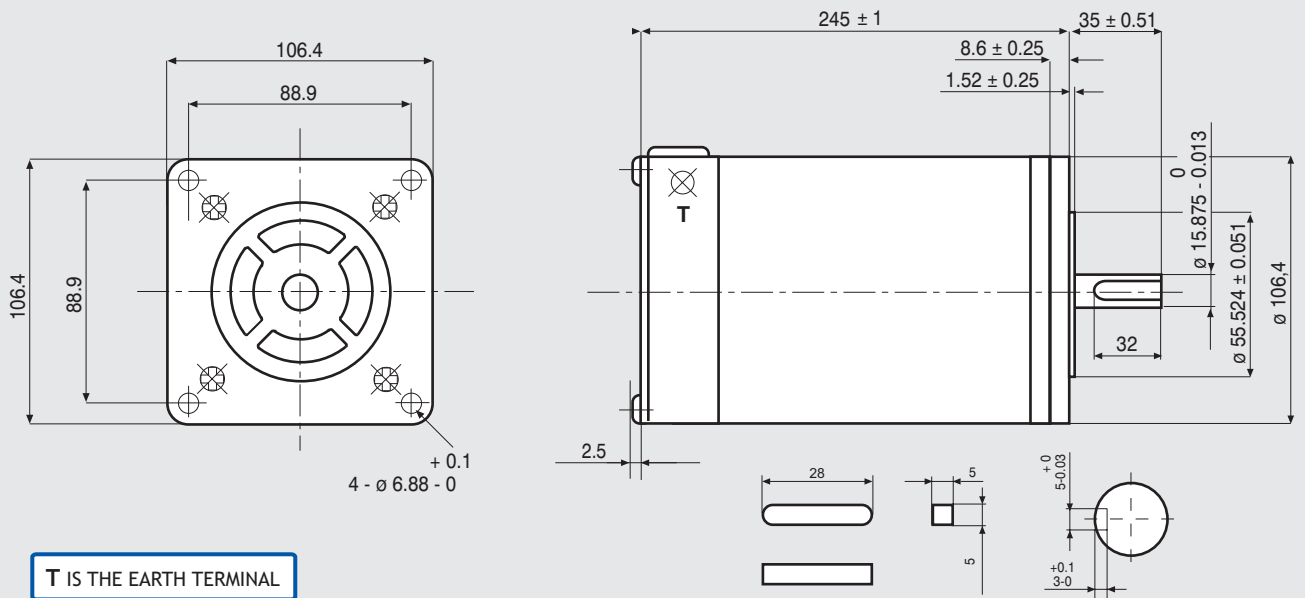


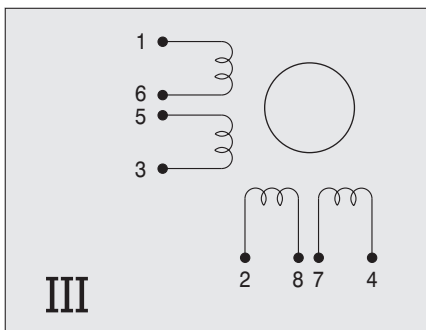
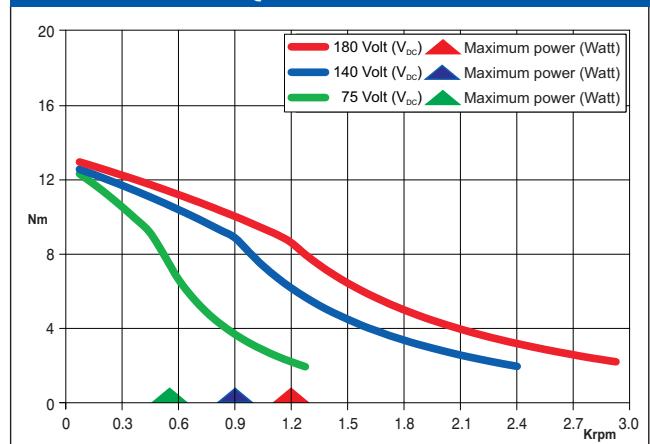
Dimensions (Unit:mm)



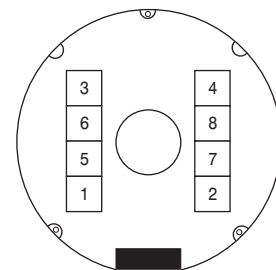
FEATURES

MODEL	103-8960-6551
BASIC STEP ANGLE	1.8° ± 0.09°
BIPOLAR CURRENT (Amp)	14.1
UNIPOLAR CURRENT (Amp)	10
RESISTANCE (Ohm)	0.28
INDUCTANCE (mH)	3.0
BIPOLAR HOLDING TORQUE (Ncm)	2060
UNIPOLAR HOLDING TORQUE (Ncm)	1580
ROTOR INERTIA (Kg·m ² × 10 ⁻⁷)	11500
THEORETICAL ACCELERATION (rad × sec. ⁻²)	17900
BACK E.M.F. (V/Krpm)	120
MASS (Kg)	10.5
PROTECTION DEGREE	IP43
LEADS CODE	III

TORQUE/SPEED CURVE



Terminal box - Internal view



Suggested R.T.A. driver: contact R.T.A.



R.T.A. s.r.l.
Via E. Mattei - Fraz. Divisa
27020 MARCIGNAGO (PV) ITALY
Tel. +39.0382.929.855 - Fax +39.0382.929.150
www.rta.it

R.T.A. Deutschland GmbH
Bublitzer Straße 34
40599 DÜSSELDORF (Germany)
Tel. +49.211.749.668.60 - Fax +49.211.749.668.66
www.rta-deutschland.de

R.T.A. IBERICA-Motion Control Systems S.L.
C/Generalitat 22, 1° 3°
08850 GAVA - BARCELONA (Spain)
Tel. +34.936.388.805 - Fax +34.936.334.595
www.rta-iberica.es