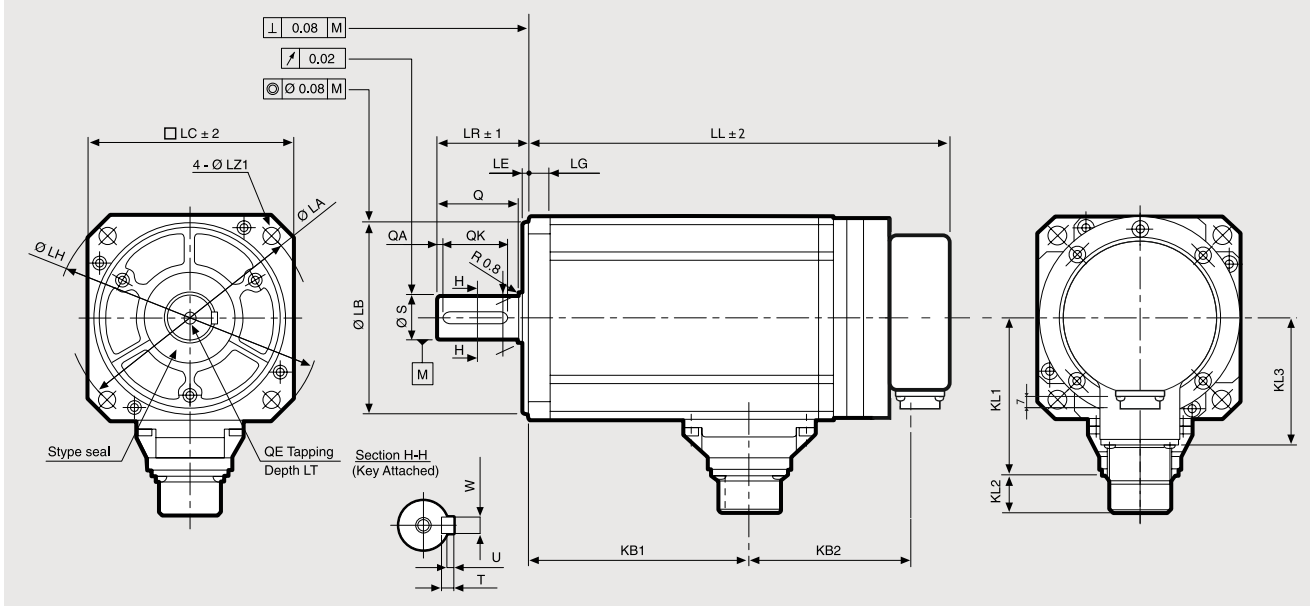


# R1AA10150FXH00M (R1AA10150FCH00M)

SANYO DENKI  
SANMOTION



## Dimensions (Unit:mm)



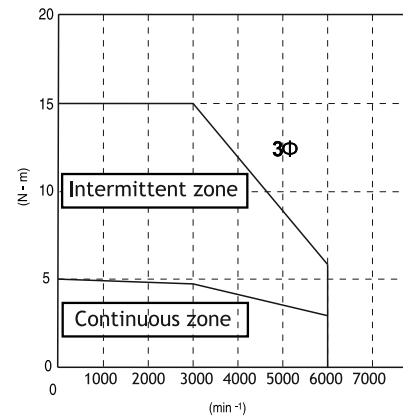
without brake	with brake	with brake	with brake	KL1	KL2	KL3	LG	LA	LB	LE	LH	LC	LZ1	LZ2	LR	S	Q	QA	QK	W	T	U	KB1	QE	LT
168	68	209	109	78	19	70	10	115	0	3	130	100	9	--	45	0	40	3	32	0	6	2.5	85	M6	20
									95-0.035							22-0.013				6-0.030					

## FEATURES

MODEL	R1AA10150FXH00M	
NOMINAL POWER	(W)	1500
NOMINAL SPEED	(rpm)	3000
MAXIMUM SPEED	(rpm)	6000
NOMINAL TORQUE	(Nm)	4.80
STALL TORQUE	(Nm)	4.90
MAXIMUM TORQUE	(Nm)	15
INERTIA	(Kg*m <sup>2</sup> )	2×10 <sup>-4</sup>
ENCODER	(imp./rev)	131072 (17 BIT)
PROTECTION DEGREE		IP65
WEIGHT	[version with brake] (Kg)	5 [6.6]

## TORQUE CURVE

R1AA10150F [1.5kW] + RS3A05



R.T.A. s.r.l. PAVIA (ITALY) SANYO DENKI CO., Ltd (JAPAN)

R1AA10150FXH00M  
R1AA10150FCH00M



Indicated performances refer to motor by related new RS3 standard and EtherCat amplifiers.

3Φ = torque curve with three-phase power supply

## Suggested amplifiers: RS3A05A0AA2, RS3A05A2HA4



R.T.A. s.r.l.  
Via E. Mattei - Fraz- Divisa  
27020 Marcignago (PV) (Italy)  
T +39.0382.929.855  
F +39.0382.929.150  
www.rta.it

R.T.A. Deutschland GmbH  
Bublitzter Strasse 34, 40599  
Duesseldorf (Germany)  
T +49.211.749.668.60  
F +49.211.749.668.66  
www.rta-deutschland.de

R.T.A. IBERICA  
C/Generalitat 22, Local 1  
08850 Gava - Barcelona (Spain)  
T +34 936.388.805  
F +34 936.334.595  
www.rta-iberica.es

R.T.A. INDIA Pvt  
Teerth Business Center 3<sup>rd</sup> Floor, Unit No. 7,  
Block EL-15, MIDC Bhosari Pimpri-Chinchwad,  
Pune 411026 (India)  
Tel. +91 9422507445  
www.rta-india.in